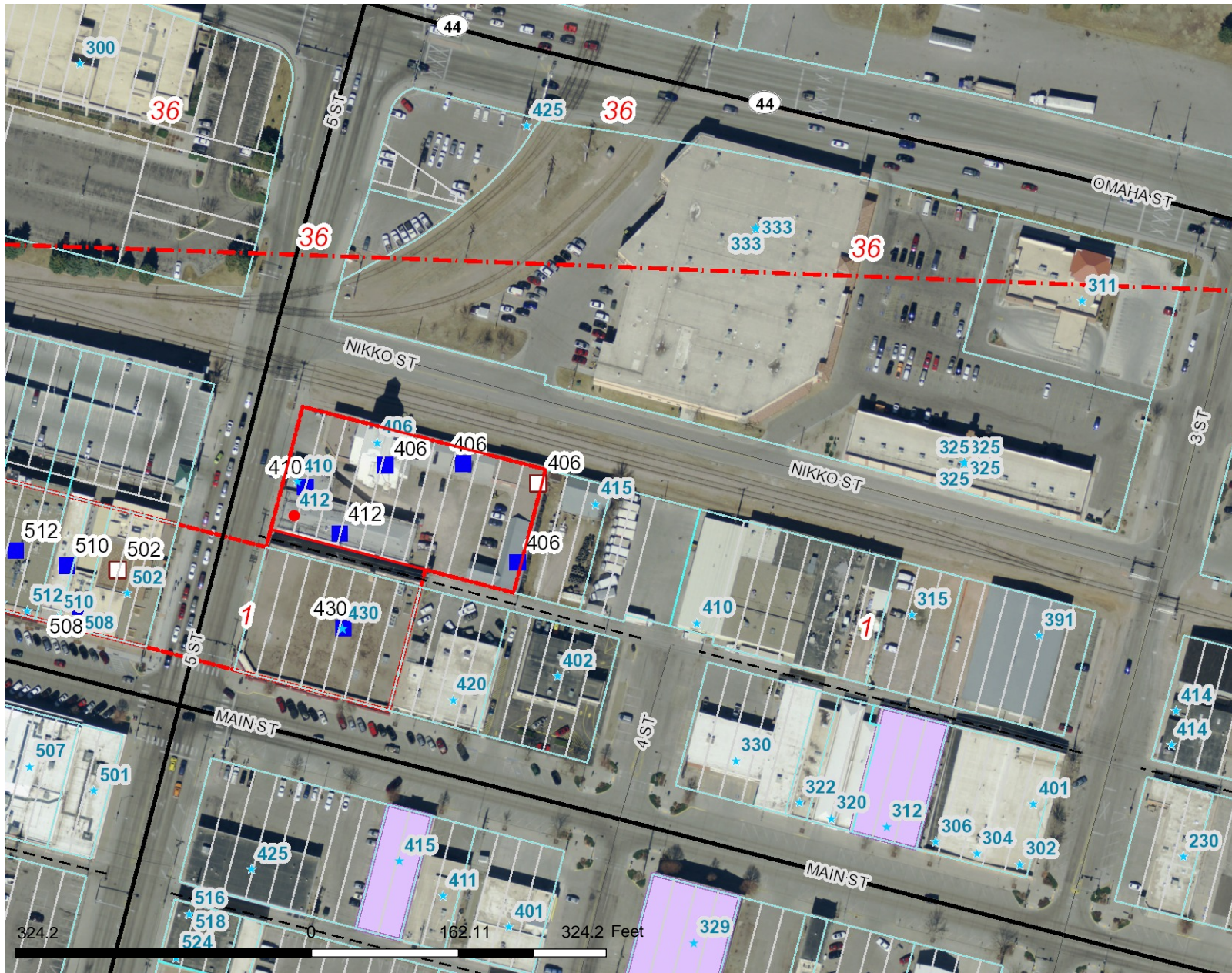


Exhibit 1: Location Map



Legend

- Roads**
 - Interstate
 - US highway
 - SD highway
 - County highway
 - Main road
 - Minor arterial
 - Collector
 - Ramp
 - Paved road
 - Unpaved road
 - FS Highway
 - Driveway
 - Paved Alley
 - Unpaved Alley
 - Unimproved road
 - Trail
 - Airport Runway
 - Not yet coded
- Address Points**
- Township/Section Lines**
 - 0
 - 7
- Tax Parcels**
- Lot Lines**
 - <Null>
 - Lot Line
 - Parcel Line
- County Line**
- Structure Type**
 - CONTRIBUTING BUILDING
 - CONTRIBUTING GARAGE
 - CONTRIBUTING SHED
 - NON-CONTRIBUTING BUILDING
 - NON-CONTRIBUTING GARAGE
 - NON-CONTRIBUTING SHED
 - NON-CONTRIBUTING STATUE
 - Historic Properties
 - Historic District Boundary



Scale: 1: 1,945

Map Notes:

DISCLAIMER: This map is provided 'as is' without warranty of any representation to accuracy, timeliness, or completeness. The burden for determining accuracy, completeness, timeliness, merchantability, and fitness for or the appropriateness for use rests solely on the user. Rapid City and Pennington County make no warranties, express or implied, as to the use of the map. There are no implied warranties of merchantability or fitness for a particular purpose. The user acknowledges and accepts the limitations of the map, including the fact that the data used to create the map is dynamic and is in the constant state of maintenance, correction, and update. This documents does not represent a legal survey of the land. There are no restrictions on the distribution of printed Rapid City/Pennington County maps, other than the City of Rapid City copyright/credit notice must be legible on the print. The user agrees to recognize and honor in perpetuity the copyrights and other proprietary claims for the map(s) established or produced by the City of Rapid City or the vendors furnishing said items to the City of Rapid City.

Exhibit 2: Early Photograph
of Grain Elevator



Exhibit 3: Correspondence with Historic Grain Elevator Site Staff

Hanzel Sarah

From: iahe@mts.net
Sent: Wednesday, August 26, 2015 11:42 AM
To: Hanzel Sarah
Subject: RE: Grain Elevator in Rapid City, SD

Sarah;

Those pipes, tubes and cones are the air filtration system to get rid of the dust in the grain. They brought that system in around the mid 70's because of legislation that came out (in Canada it was called the Black Lung Act). That system had nothing to do with the movement of grain.

I understand that in Canada we can go to the National Film Board and view a 12-14 minute video (we have one) on the operation of these rare elevators. At one time in western Canada there was over 5,700 of these structures and almost 300 grain companies, today there is well under 300 and they are now owned by farmers.

If you have any other questions please call me.

Ernie

From: Sarah.Hanzel@rcgov.org
To: iahe@mts.net
Subject: Grain Elevator in Rapid City, SD
Date: Wed, 26 Aug 2015 16:12:07 +0000

Inglis Grain Elevators National Historic Site
PO Box 81, Inglis, Manitoba
R0J 0X0

8/26/2015

Sent Via Email to iahe@mts.net

Dear Ernie,

Thank you for visiting with me on the phone about the historic structures at Inglis Grain Elevators National Historic Site in Manitoba. These structures look similar to the grain elevator in our historic downtown commercial district. As I mentioned on the phone, there is a redevelopment proposal for the "Aby's Feed and Seed" Grain Elevator. Our Historic Preservation Commission and State Historic Preservation Office are working on determining the potential for adverse effects as a result of alterations to the building. Specifically, the developer has requested to remove the metal cylinders and sorting equipment that is situated on the roof of the building.

You mentioned that you have many years of experience in operating and now preserving grain elevators. Your willingness to offer your comments on the historic grain elevator in our downtown historic commercial district is much appreciated.

Furthermore, if you recommended any readings or other resources on these structures that would be much appreciated. It was a pleasure to visit with you. I look forward to hearing from you!

Attached: Four photographs and a copy of the structure's national register nomination (#58, Building E).

Sarah Hanzel
Long Range Planner I
City of Rapid City
Community Planning & Development Services
Division of Long Range Planning
300 Sixth Street
Rapid City, SD 57701
605-394-4120
sarah.hanzel@rcgov.org

Exhibit 4: Photographs of the Grain Elevator and Roof Top Equipment



Figure 1: Inside the courtyard looking northwest toward 5th Street and Omaha



Figure 2: Same view as Figure 1, close up



Figure 3: Inside Courtyard moving west toward 5th Street entrance



Figure 4: Looking south from railroad tracks on Omaha Street



Figure 5: Looking south and west from Omaha Street railroad tracks



Figure 6: Looking east from 5th Street



Figure 7: Interior penetration and water damage



Figure 8: Interior penetration, pipe temporarily sealed



Figure 9: Additional interior



Figure 10: Interior



Figure 11: Interior



Figure 12: Roof penetration and water damage



Figure 13: Water damage



Figure 14: Water damage



Figure 15: Interior damage from pigeon feces



Figure 16: Interior damage from pigeon feces



Figure 17: Interior damage from pigeon feces



Figure 18: Close-up showing roof top equipment



Figure 19: Close-up showing previous sealing efforts on roof top equipment



Figure 20: Close-up roof top equipment



Figure 21: Close-up roof top equipment



Figure 22: Close-up roof top equipment

Exhibit 5: Correspondence with Rapid City Fire Department



CITY OF RAPID CITY

RAPID CITY, SOUTH DAKOTA 57701

Rapid City Fire Department

Fire Prevention Division

1930 Promise Road

(605) 394-5233

Fax (605) 394-5235

August 18, 2015

Sarah Hanzel
Long Range Planner I
Community Planning & Development Services
City of Rapid City
300 Sixth Street
Rapid City, SD 57701

Re: Aby's Feed Building

Sarah,

Just a quick follow up to our conversation regarding the old Aby's Building on 5th Street. You identified that the owner was considering removal of the exterior dust / seed moving cyclones, exposed elevator legs and associated tubing. I have looked the building over and it appears that although unique, I can see where the continued existence of the exterior mechanical equipment will pose a significant ongoing maintenance issue. The equipment is a source for water leaks as it presents numerous penetrations through the roof assembly, and has seams or openings which are not water tight. The metal equipment also tends to create condensation which then enters the building as result of temperature changes, the condensation will likely increase as the building repurposing continues. I have been through the building numerous times evaluating fire protection needs, at which time I also observed evidence of pigeons or rodents entering the building through the equipment as well.

The owner is making great progress cleaning out the various voids of the structure in preparation for expanded repurposing. However the inability to stop water and vermin intrusion makes this nearly impossible to complete, and threatens future habitability as a business occupancy. In my opinion the removal of the previously noted equipment thus allowing weatherization would be a great improvement which supports preservation of the structure overall.

Sincerely,

Timothy D. Behlings
Assistant Chief
Fire Prevention Division
Rapid City Fire Department
10 Main Street
Rapid City, SD 57701
605-394-5233 ext. 6102
605-390-4511 cell